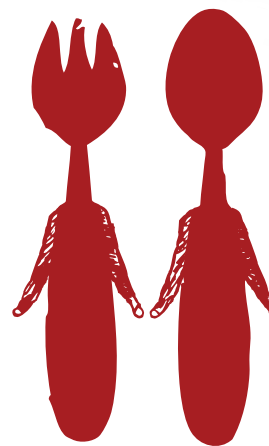


*"It doesn't interfere with the rest of your business which is the best part, you're doing something good without leaving the shop"* - Social Spoons Partner Cafe Owner



# SOCIAL SPOONS

café meals project



City of  
STONNINGTON



Supported by the City of  
Port Phillip Community  
Grants Program and the  
City of Stonnington.



LET'S HELP each other OUT



SOCIAL  
SPOONS  
café meals project

If you would like to know more about **SOCIAL SPOONS**, please contact  
**StarHealth** by phone 9525 1300 or email [socialspoons@starhealth.org.au](mailto:socialspoons@starhealth.org.au)  
and ask for the **SOCIAL SPOONS** Program Coordinator.

[socialspoons.org.au](http://socialspoons.org.au)  [facebook.com/socialspoons](https://facebook.com/socialspoons)



FRESH IDEAS  
for connecting our  
COMMUNITY!

Gold Partner Cafés

Improving social connectedness

within the **StarHealth** community.



## what is social spoons?

- > SOCIAL SPOONS is a project run by **StarHealth**
- > SOCIAL SPOONS encourages isolated members of our community to **dine at supportive and welcoming cafés** in their local area
- > SOCIAL SPOONS provides a **meal subsidy for members** to dine at partner cafés (see maps next pages). Each member will be linked with a Key Worker from StarHealth who will aim to connect their member with the wide range of **wonderful social groups, activities and health services** within our local area
- > SOCIAL SPOONS aims to **promote social connectedness** amongst our broader community!

## how does social spoons work?

SOCIAL SPOONS members are eligible to receive 4 subsidised meals per month (plus a 5th fully covered at no cost to member. Members pay a minimum of \$2.50 - StarHealth will reimburse the cafe up to \$12.50 for each meal (if total purchase is more than \$15 member pays the extra). **There are no-out-of-pocket costs for cafés.**

**STEP 1:** SOCIAL SPOONS members present their **SOCIAL SPOONS card** to café staff when ordering their meal.

**STEP 2:** Café staff stamp the card, record the member ID# and meal subsidy on the provided recording sheet.

**STEP 2:** When the recording sheet is full (or earlier if preferred), café proprietors give the completed recording sheets to StarHealth for payment (direct EFT)

## how have cafés been selected?

Cafés have been carefully chosen. They must have:

- ✓ A welcoming environment
- ✓ Communal seating
- ✓ Wheelchair access
- ✓ Public transport access
- ✓ Multiple food options for \$15 or less
- ✓ Foods on display or pictures of foods
- ✓ Healthy options on the menu
- ✓ Friendly, welcoming and interactive staff

## what is in it for the cafés?

- > **Up to \$9000** through the provision of 5 meals per month to 20+ members
- > Contribution towards a **healthier and more connected community**
- > **Social interaction** with a variety of clientele
- > **Promotion of café** via web-page, Social Media and local publications
- > Promotion as a **socially conscious business**



*"As soon as you help someone who really really needs help, you're helping two people."*  
- Social Spoons Partner Cafe Owner



Silver Spoon **cafés** are awarded 'Welcoming Cafe' stickers.

